

Great Lakes Dredging Team (GLDT) Beneficial Use Projects

Gene Clark, PE
Coastal Engineering Specialist
University of Wisconsin Sea Grant

Preetam R. Kuchikulla, PE
Senior Civil Engineer
Ecology And Environment, Inc.

What Is The Great Lakes Dredging Team?

- **Team of Great Lakes State (2 per State)
& Federal Partners (USACOE, EPA, USCG, Etc.)
All With Great Lakes Dredging Interests**
- **Team Has Several Standing Committees:**
 - **Legislative**
 - **Outreach**
 - **Technical (“Super Committee”)**
 - **Dredging Windows**
 - **Open Lake Placement**
 - **Beneficial Use of Dredged Material**
 - **CDF Management**
- **No “Standing \$\$” For Products**

Great Lakes Dredging Team BU Projects:

- **Currently Has Four Beneficial Use/CDF Management Projects (2014-2015)**
 - **CFIRE Funded Project (Gene)**
 - **Three Buffalo District Funded Projects (Preetam)**



- **UW-Madison Institute Funds Research & Outreach of Sustainable Freight Transportation Infrastructure & Systems**
- **Includes All Four Transportation Modes**
 - **CFIRE Funded Our Recent BU Summit Project**
 - **This Project an Outcome From the BU Summit With DOT's**

Project title: Integrated Strategy for Beneficial Use of Dredged Materials in Great Lakes Commercial Ports (1 Yr Grant: Sept 2014 - Aug 2015)

- **Project PI's:**
 - **Dr. Bill Likos, Ph.D.**
University of Wisconsin - Madison
Geo-technical Engineering Professor
 - **Dave Knight, Ret.**
Great Lakes Ports & Navigation Specialist
Great Lakes Commission & Dave Knight LLC
 - **Gene Clark, PE**
University of Wisconsin Sea Grant Institute
Coastal Engineering Specialist

- **Task #1: Laboratory and Field Characterization of Material in Representative Great Lakes CDFs (Bill Likos lead)**
 - **Determine Best Ways to Characterize CDF Material**
 - **Compare CDF Samples to Needed Material Examples (WDOT specs, construction material, etc.)**
 - **Suggest Methods To Amend Material if Necessary**
 - **Use Three (3) WI Case Study CDF's**
 - **Milwaukee CDF (standard “Box”)**
 - **Green Bay CDF (cell design)**
 - **Duluth/Superior Erie Pier CDF (Converted to PRF)**

- **Task #2: Enhancement of Existing GLC/GLDT CDF Web-based Screening Tool**
(Dave Knight lead)
- **Tool Highlights CDF Material (types & amounts)**
- **Tool is Several Years Old & Needs Updating**

Recycling Dredged Material in the Great Lakes



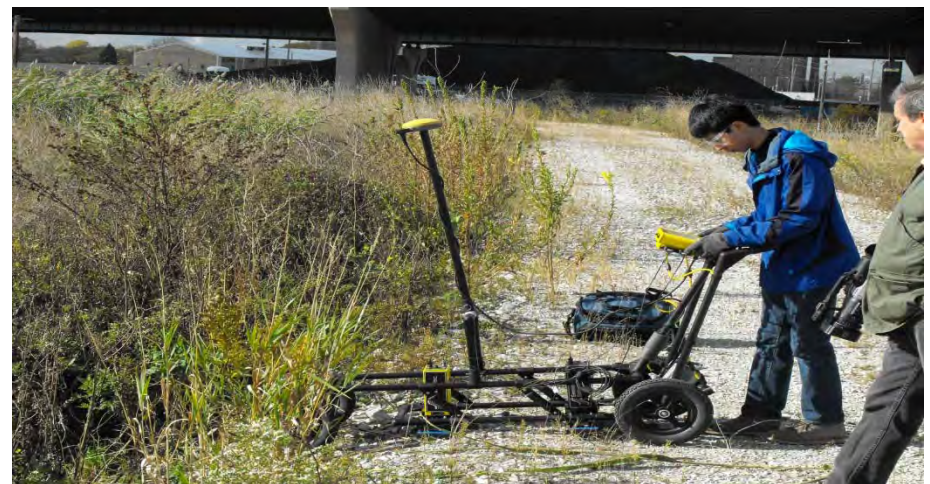
Often dredged material is simply mud (wet dirt) or wet sand. Contrary to popular belief, not all dredged material is contaminated. Using dredged material can offset the need to mine or import sand or soil from other areas. It can also save valuable space in costly disposal facilities for those really contaminated materials that cannot be reused. Clean dredged material can be used for a variety of purposes, including habitat restoration, topsoil enhancement, general fill, landscaping and road bed construction. Mildly contaminated materials can often be used for things like daily landfill cover, capping more contaminated sites, and as aggregate for construction materials that "lock in" the contaminants. This web site provides three different portals for getting information about sources of dredged material near you that can be used beneficially: 1) [Frequently Asked Questions](#) for general inquiries; 2) a [MapFinder](#) for getting detailed information on specific sediment locations around the Great Lakes; and 3) an [Advanced Query](#) that allows you to find material closest to you and that suits your needs.

<p>Frequently Asked Questions</p> <p>Frequently Asked Questions about the location, sources and kinds of sediment available for reuse at Great Lakes harbors and sediment storage facilities.</p>	<p>Map Finder</p> <p>Use this clickable map to get more detail on harbors and sediment storage facilities around the Great Lakes.</p> 	<p>Advanced Query</p> <p>Input your location and the distance you are willing to travel to answer the following:</p> <p>Where can I find sediment near me?</p> <p>Where can I find sandy sediment near me?</p>
--	---	---

This web site is a preliminary screening tool to help identify potential sources of sediment for reuse. Information provided from this web site is generated from data provided by the U.S. Army Corps of Engineers. Appropriate state and local authorities may be able to provide additional information. Also, please visit [Marketing Dredged Sediment for Beneficial Use](#) for more information.

- **Task #3: Project Outreach to Promote BU of Dredged Materials and CDF to PRF Conversions**
(Gene Clark lead)
- **Project Webinar For USACOE and CDF Managers**
- **New Brochure “Converting Existing Great Lakes Confined Disposal Facilities (CDFs) into Processing and Reuse Facilities (PRFs)”**
 - **Examples of how material can be characterized and compared to potential existing uses**
 - **Examples of Case Study CDF modifications for CDF to PRF Transformation**

- **Task #1: Laboratory and Field Characterization of Material in Representative Great Lakes CDFs (Bill Likos lead)**



Questions or Comments???



Gene Clark (WI Sea Grant)
gclark1@uwsuper.edu